

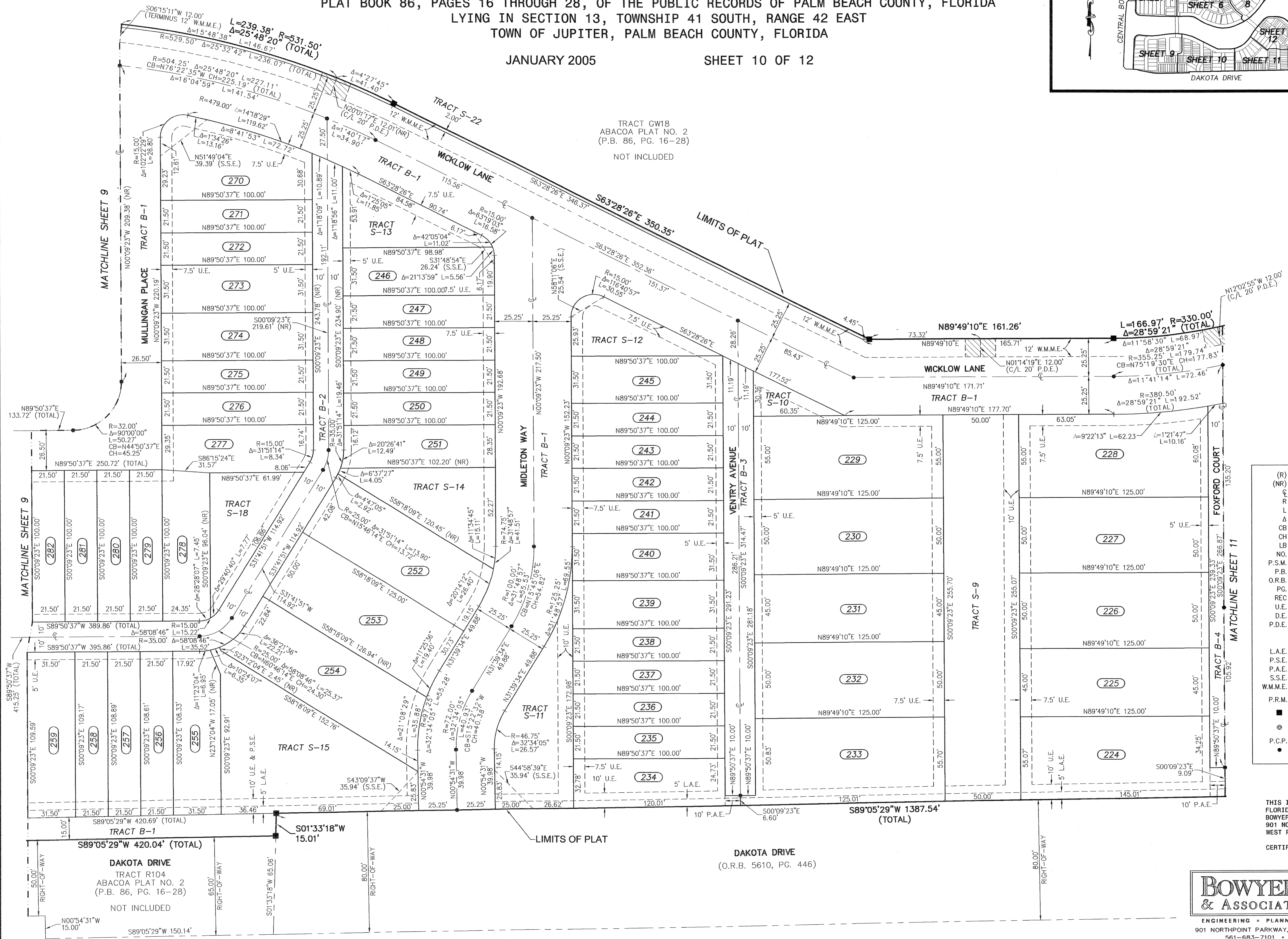
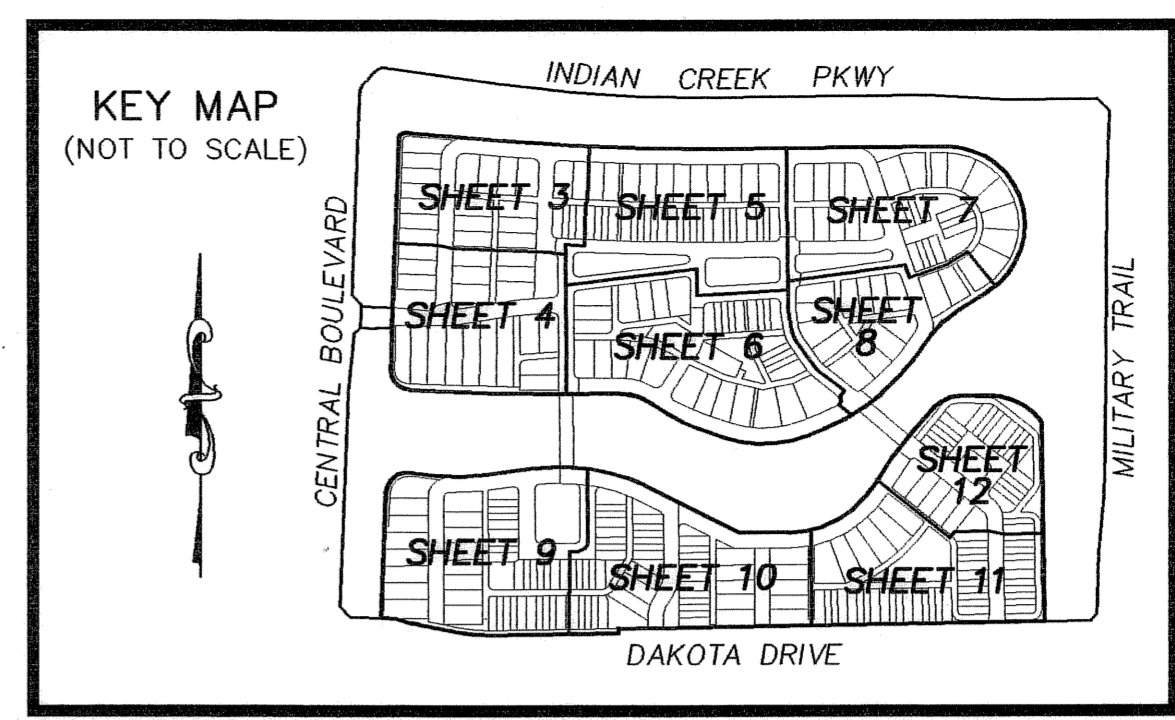
# CANTERBURY PLACE

BEING A REPLAT OF TRACTS RN5N AND RN5S, ABACOA PLAT NO. 2, AS RECORDED IN PLAT BOOK 86, PAGES 16 THROUGH 28, OF THE PUBLIC RECORDS OF PALM BEACH COUNTY, FLORIDA LYING IN SECTION 13, TOWNSHIP 41 SOUTH, RANGE 42 EAST TOWN OF JUPITER, PALM BEACH COUNTY, FLORIDA

JANUARY 2005

SHEET 10 OF 12

63



### LEGEND & ABBREVIATIONS

- (R) RADIAL
- (NR) NOT-RADIAL
- C CENTERLINE
- R RADIUS
- L ARC LENGTH
- Δ DELTA (CENTRAL ANGLE)
- CB CHORD BEARING
- CH CHORD LENGTH
- LB CERTIFICATE OF AUTHORIZATION
- NO. NUMBER
- P.S.M. PROFESSIONAL SURVEYOR & MAPPER
- P.B. PLAT BOOK
- O.R.B. OFFICIAL RECORD BOOK
- PG. PAGE
- REC RECOVERED / FOUND
- U.E. UTILITY EASEMENT
- D.E. DRAINAGE EASEMENT
- P.D.E. PUBLIC DRAINAGE EASEMENT
- HATCHED THUS:
- L.A.E. LIMITED ACCESS EASEMENT
- P.S.E. PUBLIC SIDEWALK EASEMENT
- P.A.E. PEDESTRIAN ACCESS EASEMENT
- S.S.E. SAFE SIGHT EASEMENT
- W.M.M.E. WATER MANAGEMENT MAINTENANCE EASEMENT
- P.R.M. PERMANENT REFERENCE MONUMENT
- 4"x4" CONCRETE MONUMENT WITH NAIL & DISK STAMPED "P.R.M. LB 1221"
- ⊙ NAIL & DISK STAMPED "P.R.M. LB 1221"
- P.C.P. PERMANENT CONTROL POINT
- NAIL & DISK STAMPED "P.C.P. LB 1221"

THIS INSTRUMENT PREPARED BY WILLIAM D. DONLEY, FLORIDA LICENSED SURVEYOR & MAPPER NO. 5381 BOWYER-SINGLETON AND ASSOCIATES, INC. 901 NORTHPOINT PARKWAY, SUITE 204 WEST PALM BEACH, FLORIDA 33407  
 CERTIFICATE OF AUTHORIZATION NO. LB 1221

**BOWYER-SINGLETON & ASSOCIATES, INCORPORATED**  
 ENGINEERING • PLANNING • SURVEYING • ENVIRONMENTAL  
 901 NORTHPOINT PARKWAY, SUITE 204 WEST PALM BEACH, FL 33407  
 561-683-7101 • FAX 561-683-7102 • L.B. NO. 1221